



AXCYS

Facility Security Management System

WIRELESS

Axcys Wireless Alarm and Monitoring System

Self Storage Units - Containers - Gate - Man Door

- **Complete Facility Security Monitoring**

Unit Alarming - Roller Shutter Door Position- Gate Position Monitoring - Man Door Monitoring - Other

- **Facility Security Control**

Easily add, upgrade or replace unit door monitoring

- **Automated & Autonomous**

Automated Facility Monitoring, Completely Integrated with Axcys and Popular Rental Software.

- **100% Industrial Grade**

Highest Quality Design and Hardware For Demanding Critical Facility Monitoring 24/7/365.

- **Expandable and Up-Gradable**

Expandable as Your Facility Grows, installation can be done in phases to fit your needs.

- **No Wires**

Integrates with existing Axcys Components without wires

- **Facility Graphics**

Integral To Active Visual Facility Notification





WIRELESS

Overview

Axcys Facility Security Management Wireless is *the* high performance, Automated and Autonomous Electronic Tenant and Visitor movement and accessibility Monitoring and Alarm System. *Entry, Exit* and *within* your Self-Storage Facility 24 hours a day, 7 days a week, 365 days a year.

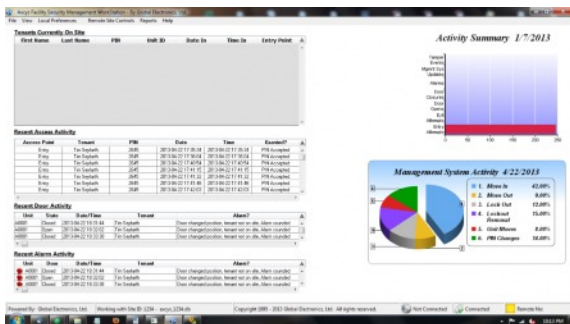
Axcys Wireless features Hi Performance, Long Range and Extended battery Life - all contained within a small waterproof case. Designed for fast and easy installation into either New Construction or Retrofit into Existing Facilities; providing the ability to inexpensively meet local market demands to upgrade Facilities Individual Unit Alarming.

Wireless Single Point and Multipoint Monitors offer a low cost means to add passive monitoring and alarming to any Self Storage Facility Unit, Locker, Garage or Container. Single Point Monitors are perfect for Annexes, Facility additions, Upgrading/Retrofitting Existing Facilities or New Construction where Monitoring/Alarming is desired.

This platform, features enterprise class reliability, available integration with GraphicX, your Property Management System, Elevator Control, Perimeter Alarm panel and Fire Panel resulting in a completely Managed and Monitored Facility to provide the best Security Possible for your Self Storage Facility.

The Monitored, Managed and Controlled Facility

Modern Self-Storage facilities feature many active and passive access points and portals in their labyrinth of buildings, floors, hallways and units. These may include Entry Gates, Exit Gates, Elevators, Roller Shutter Doors, Man Doors and Unit Doors. The Axcys Facility Security Management System is designed to incorporate these systems to provide feedback, in *real-time*, for the control, monitoring and security of the Self-Storage Facility.



There are many ways to implement controlled access and/or monitoring of these access points and portals. Axcys Facility Security Management System covers them all! Designed to efficiently and effectively support an unlimited number of monitoring and control devices from a single Facility Security Management System Controller, real time access control, monitoring and feedback to Tenants, Visitors and Managers is provided.

Incorporating modern software, developed by Global expressly for Self-Storage, provides managed communication with unlimited Remote Devices such as Keypad Access Controls, Multiplexed Alarms, Wireless Alarms and other devices. Specialty devices provide confirmation of facility workings - such as Timing Devices and the Gate Monitor that detects when the gate is open, closed or in between.

Axcys GraphicX completes the Facility Security Management solution by providing a control room of visual means for the Facility Management team and Tenants.

- **Real Time Reporting**
Every action is recorded, no data is deleted.
- **Your Local Language**
User defined remote messaging input and controlled by you, the owner and user.





WIRELESS

Features and Benefits Summary

- ✓ 100% Autonomous Self Contained
- ✓ Waterproof Case With Built-In Gasket
- ✓ Small size 2.5w x 4.5L x 1.4h
- ✓ Internal Antenna Fully Enclosed Within Case
- ✓ Internal Tamper Sensor
- ✓ Multiple Mounting Positions/Orientations
- ✓ Multiple Resend Attempts
- ✓ Dual Magnetic Switches
- ✓ LED Indicators On/Off/Cover Off Only
- ✓ Metal Mounting Plate For Easy Installation
- ✓ Multiple Magnet Positions
- ✓ Batteries included

Technical Features

- Long Range +/- 1000 feet (300 Meters)
- Ultra low power CPU
- Simple Design - No repeater necessary in most cases
- High Performance AA Batteries Included.
- User/Field Replaceable batteries available from Global or your local supplier
- Extended Battery Life Est >3 years normal use
- Average Estimated Battery Life 4 -10 years Door Use, environmental and other factors impact overall battery life
- Antenna & Electronics completely enclosed in waterproof case
- Proprietary Protocol for Secure Transmission
- Random Resend Attempt Interval
- Addressable from 1 to 65535
- Up to 254 Individual Zones (each supporting up to 65535 units)
- Up to 16,645,890 units supported




Selectable/Programmable Features

- Daily Check-In Interval
- Resend Attempts
- Selectable Contact Check Interval 0/1/2/4/8 Seconds
- Choose Magnetic Switch
- Selectable LED Indicators On/Off/Cover Off Only
- Selectable Contact Check Interval 0/1/2/4/8 Seconds
- Selectable Magnetic Switch





WIRELESS

Wireless Unit Monitoring	 Wireless Mux	 Door Alarm	 Container Alarm	RV Alarm
Standard Features	<ul style="list-style-type: none"> • Wireless Designed Expressly for UK/EU/US Self Storage • Plug-In Adaptability to Standard Mux • Available in 1-128 Doors, in 16 Door Increments • Powder Coated Aluminum Case • Welded case edges for trouble free operation • Lock & Key Security • Tamper Detector/Protection • Mix and Match with Wireless Unit Monitors • Two Fused Relays • Available in Wired and Wireless Configurations • Mix and Match with Legacy, Future and Existing Global Products • Wide Temperature -30C to +70C 	<ul style="list-style-type: none"> • Wireless Designed Expressly for UK/EU/US Self Storage • Create new revenue streams: <ol style="list-style-type: none"> 1. Rentable 2. Sell Alarm, Rent Service • 12+ month battery life • Easy DIN Rail attachment • Tamper Protection • Extremely Small Size 114.3mm x 63.5mm • LED indicators • Perfect for the tightest of applications • Bi-Directional communication • All signals confirmed • Plug in Contacts 	<ul style="list-style-type: none"> • Wireless Designed Expressly for UK/EU/US Self Storage • Create new revenue streams: <ol style="list-style-type: none"> 1. Rentable 2. Sell Alarm, Rent Service • 12+ month battery life • Easy DIN Rail attachment • Tamper Protection • Extremely Small Size 114.3mm x 63.5mm • LED indicators • Perfect for the tightest of applications • Bi-Directional communication • All signals confirmed • Plug in Contacts 	<ul style="list-style-type: none"> • Wireless Designed Expressly for UK/EU/US Self Storage • Create new revenue streams: <ol style="list-style-type: none"> 1. Rentable 2. Sell Alarm, Rent Service • 12+ month battery life • Easy DIN Rail attachment • Tamper Protection • Extremely Small Size 114.3mm x 63.5mm • LED indicators • Perfect for the tightest of applications • Bi-Directional communication • All signals confirmed • Plug in Contacts
Programmable Features	<ul style="list-style-type: none"> • Device Addressing • Date Format US/UK/EU • Time Format 12Hour/24Hour Formats • 100% User programmable display messages • Communication Timing 	<ul style="list-style-type: none"> • Device Addressing • Enable/Disable LED's for Battery Conservation. • Debouncing 	<ul style="list-style-type: none"> • Device Addressing • Enable/Disable LED's for Battery Conservation. • Debouncing 	
Optional Features	<ul style="list-style-type: none"> • Available in Wired and Wireless Configurations 	<ul style="list-style-type: none"> • One or Two Contacts per Unit • Internal Contacts 	<ul style="list-style-type: none"> • One or Two Contacts per Unit • Internal Contacts 	<ul style="list-style-type: none"> • Cigarette Lighter Power
Installation Features	<ul style="list-style-type: none"> • Easy 15 Min Competition Upgrade • Use existing wiring and/or power supplies • Support Wireless, Parallel, Star, Tree or any combination of wiring topography designs • Wide Input Voltage 7V to 24V [18 Nominal] 	<ul style="list-style-type: none"> • Easy 2 Screw DIN Rail Install • Positive locking DIN Rail Mounting and removal • Mount Inside or Outside Unit • Mount anywhere, does not need to be next to door or contact. 	<ul style="list-style-type: none"> • Easy 2 Screw DIN Rail Install • Positive locking DIN Rail Mounting and removal • Mount Inside or Outside Unit • Mount anywhere, does not need to be next to door or contact. 	
Maintenance Features	<ul style="list-style-type: none"> • Modular Design for easy field Upgrades and Repair • Low Maintenance 	<ul style="list-style-type: none"> • Low Maintenance • Serviceable batteries 	<ul style="list-style-type: none"> • Low Maintenance • Serviceable batteries 	<ul style="list-style-type: none"> • Low Maintenance
Warranty - See website	1 Year	1 Year	1 Year	1 Year





WIRELESS



Property: Secur Self Storage
Location: Hamburg Germany

Units	1645
Floors	6
Elevators	2
Keypads	5
Muxes	17





WIRELESS

United Kingdom



Portugal



United Kingdom

